

THINGS TO DO IN HAPPISBURGH

St Mary's Church, Tower Openings

Mid April to October. See timetable in church for opening.

Spectacular views of the coast and surrounding countryside and an epic 133 step climb!

Adults £2, children £1 (minimum height 140cm)



happisburgh.org/church/openings

Lighthouse Open Days

Occasional Sundays and Bank Holidays, April to September.
Private visits for individuals or groups at other times.

Adults £3, children £1 (16 and under, minimum height 1m)

Bookings happislight@keme.co.uk



happisburgh.org/lighthouse/open-days



Black and Red Study II. This drawing in charcoal and pastel is by Norwich artist Malca Schotten. It shows the new bay near the car park in Happisburgh in 2010, before the creation of the ramp.

HAPPISBURGH VILLAGE TRAIL

The 1.75 mile trail on the map in this leaflet takes you past landmarks and historic buildings in Happisburgh. Most are private buildings so please do not enter.

Along the trail, you will find four information panels that provide a snapshot of the Happisburgh story. They are marked on the map.

We recommend you start at St Mary's Church, follow the route in numerical order and finish back at our historic and friendly pub!

**PLEASE TAKE CARE ALONG
OUR CHANGING COASTLINE
AND RURAL VILLAGE ROADS.**



FIND OUT MORE

This trail has been produced by Happisburgh Heritage Group. For detailed information seek out 'The Book of Happisburgh' by Mary Trett and Richard Hoggett or visit www.happisburgh.org



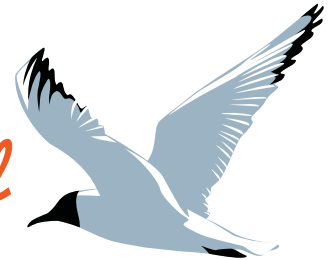
We hope you enjoy your visit and that you come back soon!

www.happisburgh.org



Explore HAPPISBURGH

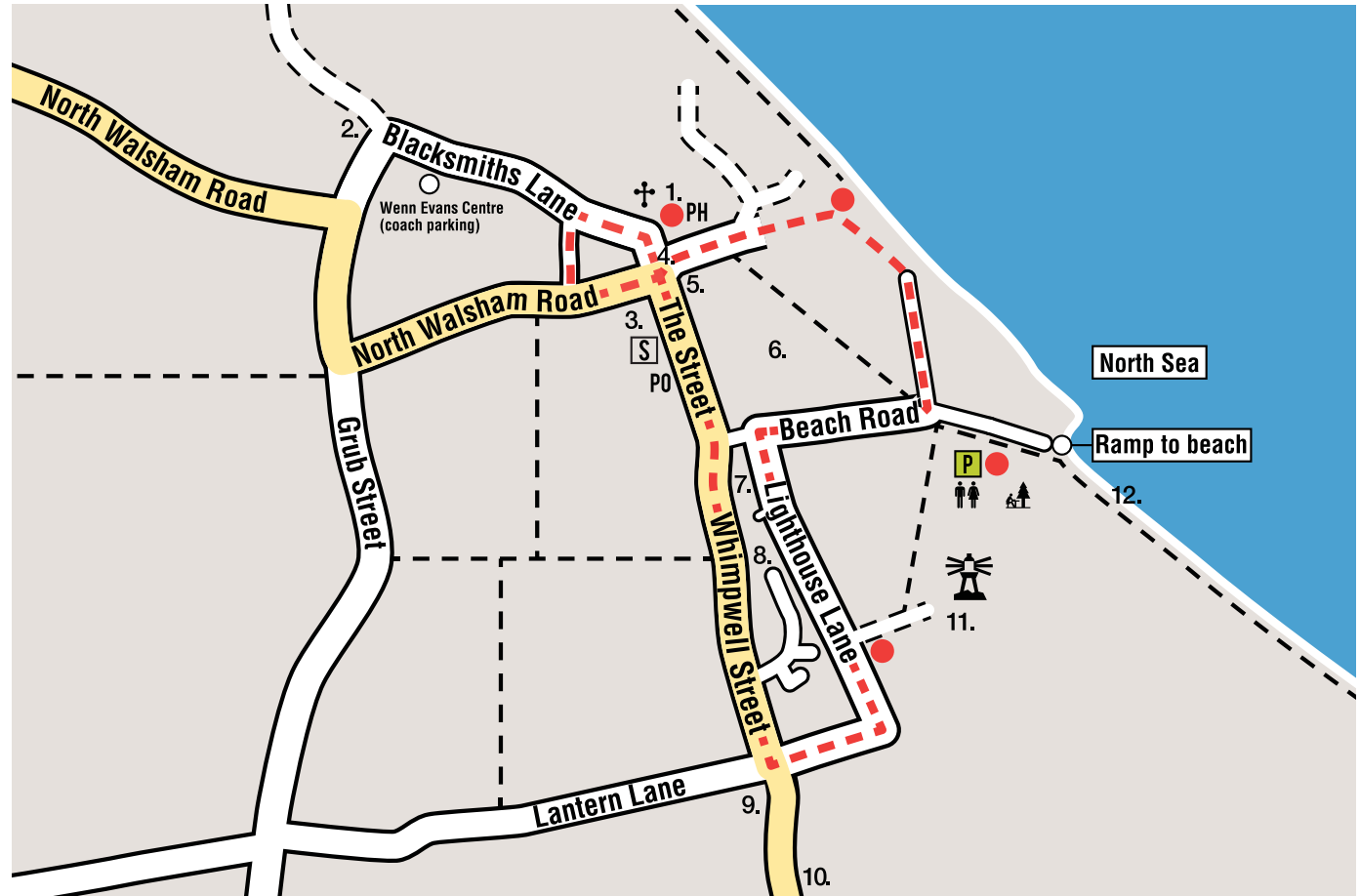
Village Trail



**A WALK AROUND ONE OF NORFOLK'S MOST
DISTINCTIVE AND HISTORIC VILLAGES**

KEY

1. **St Mary's Church (15th century)** Notable for its 110ft tower, octagonal font and carved rood screen.
2. **Church Farm (around 1750)** Horses from here used to help launch the lifeboat. Henry Moore and various artist friends stayed here for the summers of 1930 and '31.
3. **Tithe Barn (probably 15th century)** Happisburgh's oldest barn. Built with local bricks and flints from the shore. Possibly used for collecting tithes (see 5 below).
4. **Village sign (carved by Harry Carter)** Depicting Edric the Dane a Viking Lord who once owned Happisburgh, a mass baptism of 170 people in 1793, Maud Bigod (b. 1085) who received Happisburgh as part of her dowry, St Mary's Church, the lighthouse, a traditional lifeboat and a sheaf of wheat.
5. **The Monastery (15th Century)** Benedictine monks in Wymondham owned land and buildings in Happisburgh. They may have used the Monastery as a base for collecting tithes (a 10% tax paid annually to the church).
6. **St Mary's (1900, now called Happisburgh Manor)** Holiday home designed by Arts and Crafts architect Detmar Blow. All materials were sourced locally – only the glass came from beyond Norfolk.
7. **The Forge (1814)** Once part of a large farm the forge was still in use in the 1939-45 war.
8. **Lighthouse Farm and 'duck-pit' (18th century)** The flint walls show many signs of alterations.
9. **Seacroft Farmhouse (1791)** Used as the Quartermaster's Store during the 1914-18 war.
10. **The Old Swan Inn (1701)** Previously housed a forge and was clubhouse for a lodge of the 'Oddfellows' (an early form of Friendly Society).
11. **Happisburgh Lighthouse (1789)** The oldest working lighthouse in East Anglia. First illuminated by oil, and, in the 19th century, gas lamps. Acetylene lighting was introduced in 1929 followed by electricity in 1949.
12. **Happisburgh Beach** Internationally important archaeological site. At low tide look for the remains of the lost 'Low Lighthouse'.



MAP

- | | | |
|--------------------|-----------------|----------------------|
| ✝ St Mary's Church | [S] School | ● Information panels |
| PH Hill House Inn | [P] Car park | — Main road |
| PO Post office | ♿ Toilets | - - - Track |
| 🔦 Lighthouse | 🌲 Picnic tables | - - - Footpath |
| | | - - - Trail |

